

---

**ARTIFICIAL INTELLIGENCE-DRIVEN CURRICULUM INNOVATION FOR RE-  
ENGINEERING TEACHING AND LEARNING IN NIGERIAN COLLEGES OF  
EDUCATION**

**BY**

**NKWOCHA, STELLA. E Ph.D**

Department of Curriculum and Instruction  
Federal College of Education, Obudu, Cross River State, Nigeria,

**ORCID No:** 0009-0009-9865-1592

[stellankwocha42@gmail.com](mailto:stellankwocha42@gmail.com)

**07036377532**

**Oshie, Catherine Katanyi Ph.D**

Department of Psychology  
Federal College of Education, Obudu

[oshiekathy@gmail.com](mailto:oshiekathy@gmail.com)

**+2347036221945**

**&**

**NKWOCHA, OKECHUKWU. C**

Department Of Cyber Security  
Miva University Abuja

[Wilchukzi14@gmail.com](mailto:Wilchukzi14@gmail.com)

**+234 813 540 7609**

**Abstract**

*Artificial Intelligence (AI) has become a transformative technological force shaping modern education systems across the world. Educational institutions are increasingly integrating AI technologies into teaching, learning, and curriculum development in order to improve learning outcomes and enhance educational efficiency. In Nigeria, Colleges of Education play a critical role in preparing teachers who will drive educational development at the basic education level. However, many teacher education curricula still rely heavily on traditional pedagogical approaches that do not adequately incorporate emerging technologies. This paper examines*

*Artificial Intelligence driven curriculum innovation in enhancing teaching and learning in Nigerian Colleges of Education. The study discusses the concept of Artificial Intelligence in education, the importance of curriculum innovation, and the application of AI technologies in teaching and learning anchored on Constructivist Learning Theory and the Technological Pedagogical Content Knowledge (TPACK) framework. It further highlights how AI-powered tools such as intelligent tutoring systems, adaptive learning platforms, learning analytics, and automated assessment systems can support innovative instructional practice, key challenges affecting AI integration in Nigerian Colleges of Education, including inadequate technological infrastructure, limited digital competencies among educators, and insufficient policy support. The paper recommended that policymakers, teacher educators, and educational institutions should guide the support of implementing Artificial Intelligence driven curriculum reforms. It finally concludes that AI-driven curriculum innovation can significantly improve teaching effectiveness, enhance students' learning experiences, and contribute to national development.*

**Keywords:** Artificial Intelligence, Curriculum Innovation, Teacher Education, Re-engineering Teaching and Learning

## Introduction

The twenty-first century has witnessed rapid technological advancement that has significantly influenced social, economic, and educational systems worldwide. Among emerging technologies, Artificial Intelligence (AI) has become one of the most transformative innovations shaping modern education. Artificial Intelligence technologies enable machines and computer systems to perform tasks that typically require human intelligence such as reasoning, learning, problem-solving, and decision-making. Educational systems across the world are increasingly exploring the integration of Artificial Intelligence into teaching and learning processes. AI technologies have introduced innovative instructional tools that support personalized learning, automated assessment, and data-driven educational decision-making. According to UNESCO (2021), Artificial Intelligence has the potential to improve educational access, enhance teaching effectiveness, and promote inclusive learning environments.

In Nigeria, Colleges of Education are responsible for preparing teachers who will teach at the basic education level. These institutions play a vital role in developing competent educators capable of delivering quality education. However, many teacher education programmes still rely heavily on traditional curricula and teaching methods that do not adequately reflect the realities of the digital age. The integration of Artificial Intelligence into curriculum design can significantly enhance teaching and learning processes by promoting innovation, improving instructional strategies, and supporting personalized learning experiences. Artificial Intelligence driven curriculum innovation

therefore represents a strategic approach for transforming teacher education programmes in Nigerian Colleges of Education.

Curriculum innovation refers to the deliberate process of renewing, redesigning, or transforming educational curricula to improve learning outcomes, respond to societal changes, and integrate emerging knowledge, skills, and technologies. It goes beyond routine curriculum revision by emphasizing creativity, relevance, and responsiveness to contemporary educational demands such as digital literacy, global competence, and learner-centered pedagogy. Curriculum innovation involves the introduction of new content, teaching methods, assessment strategies, and learning experiences that align with the needs of the 21st century (Fullan, 2020; OECD, 2021). It is often driven by factors such as technological advancement, policy reforms, labor market demands, and the need for inclusive and equitable education systems. Thus, curriculum innovation is not a one-time activity but a continuous, dynamic process that ensures education remains meaningful and effective in a rapidly changing world.

Furthermore, effective curriculum innovation requires the active involvement of key stakeholders, including teachers, policymakers, students, and the wider community, as well as adequate support systems such as professional development and institutional capacity. Teachers play a central role as implementers and co-creators of innovative practices, making their readiness and adaptability critical to success (UNESCO, 2020). Additionally, curriculum innovation must be context-sensitive, taking into account cultural, social, and economic realities to ensure sustainability and relevance. Research emphasizes that successful innovation is characterized by flexibility, collaboration, and ongoing evaluation to measure its impact on teaching and learning outcomes (Voogt et al., 2021).

Therefore, curriculum innovation is essential for fostering critical thinking, creativity, and lifelong learning, which are crucial competencies for navigating the complexities of modern society. Teacher education refers to the structured processes and programs designed to prepare, equip, and continuously develop teachers with the knowledge, skills, attitudes, and professional competencies required for effective teaching. It encompasses both pre-service education where prospective teachers are trained in pedagogical theories, subject content, and classroom practices and in-service professional development aimed at improving the quality of practicing teachers.

Contemporary perspectives emphasize that teacher education must go beyond traditional content delivery to include reflective practice, digital competence, inclusive education, and culturally responsive teaching approaches (Darling-Hammond, 2020; OECD, 2021). This shift is largely driven by the complexities of 21st-century classrooms, where teachers are expected to facilitate critical thinking, creativity, collaboration, and problem-solving among diverse learners. Therefore, teacher education is increasingly viewed as a dynamic and lifelong process that adapts to evolving educational needs and global trends.

Re-engineering teaching and learning refers to the fundamental redesign of instructional processes, pedagogical approaches, and learning environments to improve educational effectiveness, efficiency, and relevance in response to contemporary demands. It involves critically examining traditional teaching methods and transforming them through the integration of innovative strategies such as digital learning technologies, student-centered instruction, competency-based education, and data-driven decision-making. This concept emphasizes a shift from rote memorization to active, collaborative, and experiential learning that fosters critical thinking, creativity, and problem-solving skills (OECD, 2021; UNESCO, 2020).

Furthermore, re-engineering teaching and learning requires systemic change, including curriculum alignment, teacher capacity building, and institutional support, to ensure sustainable implementation. As education systems adapt to rapid technological advancements and global challenges, re-engineering teaching and learning becomes essential for preparing learners to thrive in a dynamic and knowledge-driven society.

### **Concept of Artificial Intelligence**

Artificial Intelligence refers to the capability of machines or computer systems to perform tasks that normally require human intelligence. Such tasks include learning from experience, reasoning, understanding language, recognizing patterns, and making decisions (Russell & Norvig, 2021). Artificial Intelligence systems rely on algorithms, machine learning techniques, and large datasets to analyze information and generate insights. These technologies allow computers to simulate aspects of human cognition and perform complex analytical tasks.

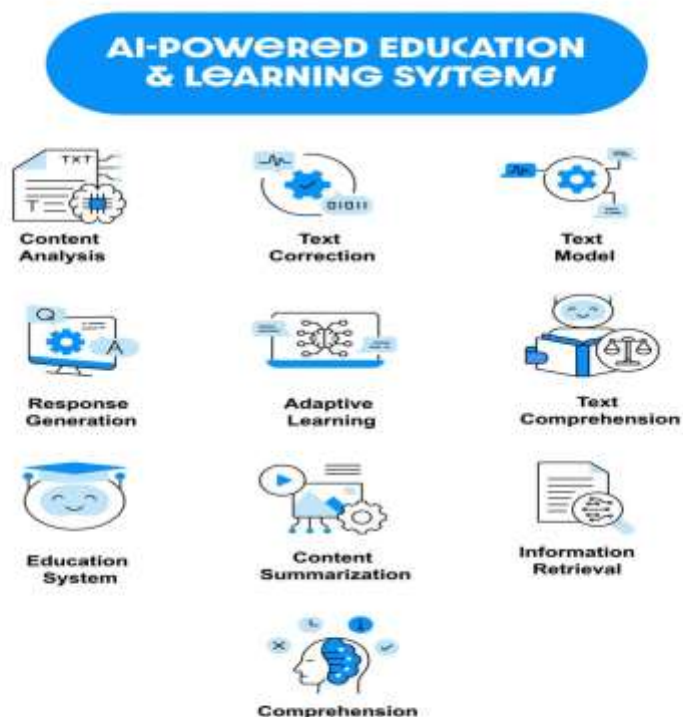
In education, Artificial Intelligence involves the use of intelligent technologies to support teaching, learning, curriculum development, and educational administration. Holmes, Bialik, and Fadel (2019) describe AI in education as the use of intelligent systems to improve learning experiences and support teachers in delivering effective instruction. Examples of Artificial Intelligence technologies used in education include:

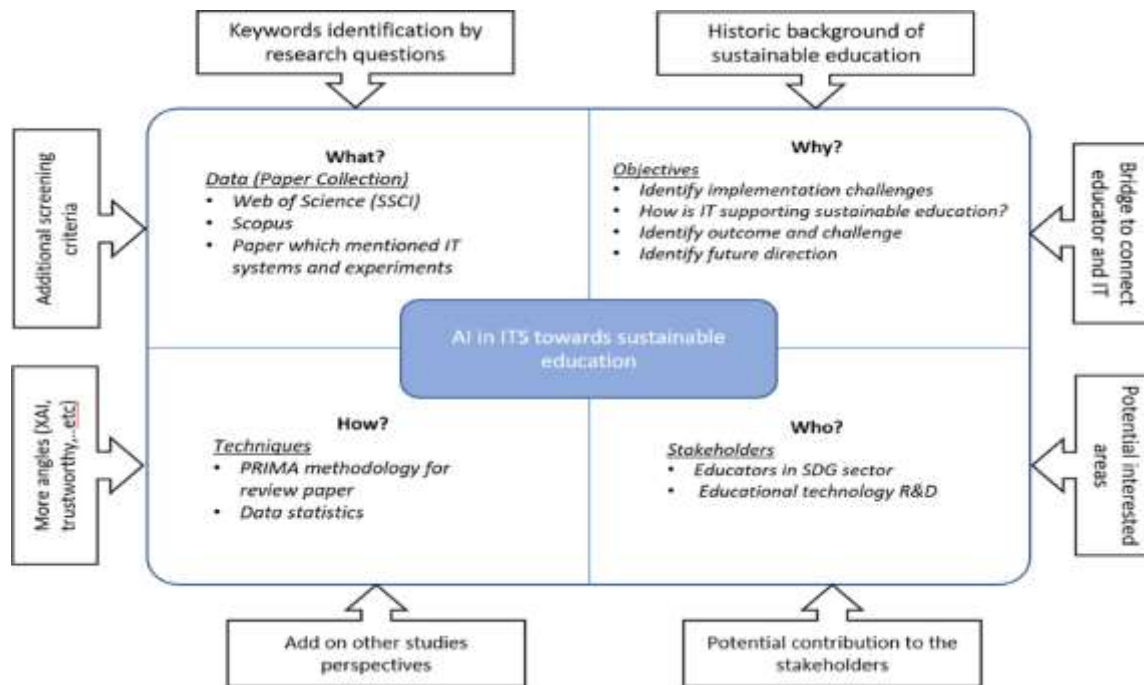
- **Intelligent tutoring systems:** Intelligent Tutoring Systems (ITS) are computer-based instructional systems that use artificial intelligence to provide personalized teaching and feedback to learners based on their individual needs, performance, and learning pace. They simulate one-on-one tutoring by adapting content, assessing understanding in real time, and guiding learners through problem-solving processes to enhance learning outcomes.
- **Adaptive learning platforms:** Adaptive learning platforms are digital learning systems that use data analytics and algorithms to adjust instructional content, pace, and pathways according to each learner's needs and performance. They provide personalized learning experiences by continuously assessing progress and delivering targeted resources, feedback, and support to improve understanding and outcomes.

- Learning analytics tools: Learning analytics tools are digital systems that collect, measure, and analyze data about learners and their activities to understand and improve the learning process. They provide insights into student performance, engagement, and progress, enabling educators to make informed decisions and offer targeted support to enhance learning outcomes.
- Educational chatbots: Educational chatbots are AI-powered conversational systems designed to support teaching and learning by interacting with students through text or voice in real time. They provide instant responses, guidance, and feedback on academic tasks, helping learners access information, practice skills, and stay engaged outside the traditional classroom.
- Automated grading systems: Automated grading systems are technology-driven tools that use algorithms and artificial intelligence to assess and score students' assignments, quizzes, or exams with minimal human intervention. They provide fast, consistent feedback and evaluation, helping educators save time while supporting timely monitoring of student performance.

These technologies provide opportunities for transforming traditional educational practices into more interactive, personalized, and efficient learning environments.

### Artificial Intelligence in Education





Artificial Intelligence technologies are transforming educational practices by introducing innovative tools that enhance teaching and learning processes. AI-powered learning systems allow educators to provide personalized instruction, monitor student progress, and improve learning outcomes. One of the most important applications of Artificial Intelligence in education is personalized learning. AI systems analyze students' learning patterns and adjust instructional content to match individual learning needs. This allows learners to progress through educational materials at their own pace. Another significant application is automated assessment. AI-powered grading systems evaluate assignments and tests quickly and accurately, reducing teachers' workload and enabling faster feedback to students.

Artificial Intelligence also supports learning analytics, which involves analyzing student learning data to identify patterns in academic performance. Learning analytics helps teachers make informed decisions about instructional strategies and student support. Other AI applications in education include:

1. Virtual learning assistants: Virtual assistants are AI-powered digital tools that support teaching and learning by providing real-time guidance, answering questions, and facilitating personalized learning experiences for students.
2. AI-powered simulations: AI-powered simulations are the use of artificial intelligence to create realistic, dynamic, and adaptive virtual models that mimic real-world systems, behaviors, or environments for training, analysis, or experimentation.

3. Intelligent content creation systems: Intelligent content creation systems are AI-driven platforms that automatically generate, adapt, and personalize text, images, audio, or video to meet specific audience needs and contexts.
4. Predictive analytics for student performance: Predictive analytics for student performance is the use of AI and data analysis to forecast academic outcomes, identify learning challenges, and guide personalized interventions for improved success.

These technologies demonstrate the potential of Artificial Intelligence to enhance teaching effectiveness and student learning experiences.

### **Curriculum Innovation in Teacher Education**

Curriculum innovation in teacher education in Nigeria refers to the continuous redesign of teacher preparation programmes to equip educators with the competencies required to implement modern, relevant, and technology-driven curricula in schools. It emphasizes aligning teacher education with emerging educational trends such as digital literacy, learner-centered pedagogy, and competency-based instruction, ensuring that teachers can effectively translate curriculum reforms into classroom practice. In Nigeria, this innovation is driven by the need to address gaps in teacher quality, improve professional capacity, and respond to societal and technological changes, as curriculum innovation is seen as a catalyst for educational transformation and sustainable development. Furthermore, teacher education institutions are increasingly expected to integrate ICT training, practical teaching experiences, and continuous professional development to enhance teachers' responsiveness to new curriculum demands and improve learning outcomes.

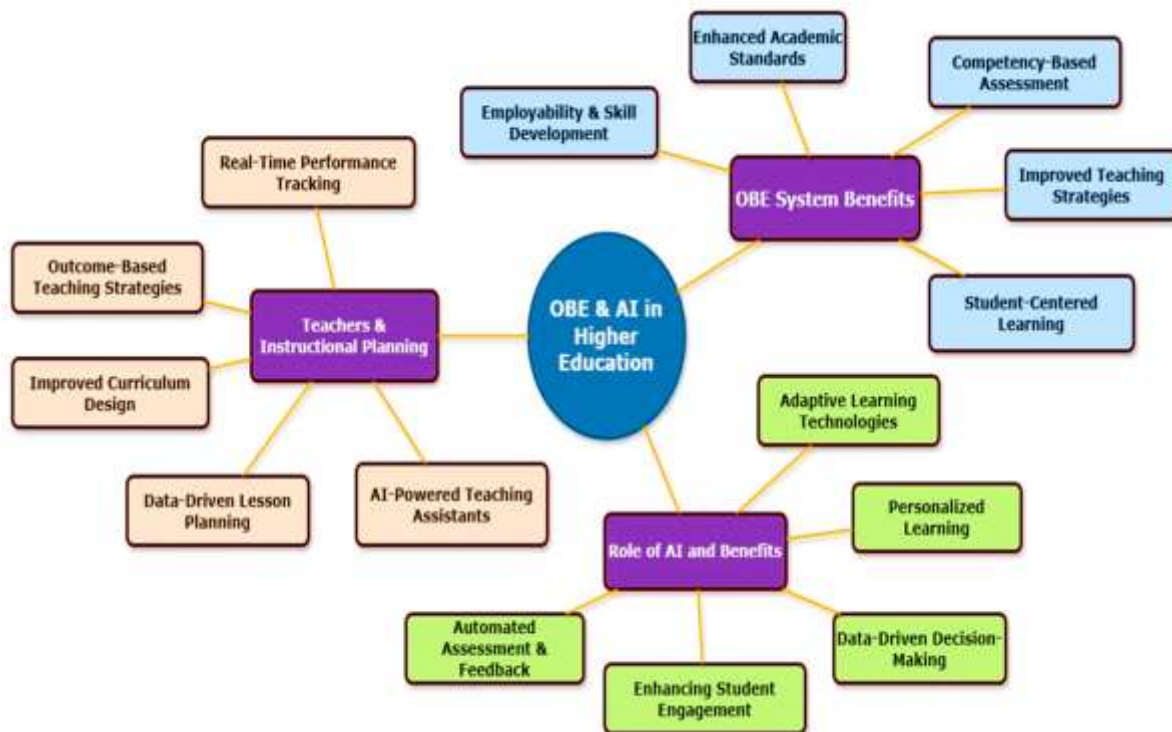
However, despite these efforts, challenges such as inadequate funding, limited infrastructure, and insufficient professional training continue to hinder effective curriculum innovation in teacher education in Nigeria. Studies indicate that teachers play a central role as implementers and change agents, yet their effectiveness depends largely on the level of support, training, and involvement in the innovation process.

Additionally, national initiatives aimed at digital transformation such as integrating ICT and modern pedagogical approaches into teacher training highlight the growing recognition of innovation as essential for improving educational quality and achieving national development goals. Therefore, curriculum innovation in teacher education remains a critical and ongoing process that requires systemic support, stakeholder collaboration, and sustained investment to ensure that Nigerian teachers are adequately prepared for the demands of 21st-century education.

Artificial Intelligence driven curriculum innovation involves integrating AI tools and technologies into teaching and learning processes. This includes introducing courses on Artificial Intelligence in education, digital pedagogy, and educational data analytics. Through curriculum innovation,

teacher education institutions can prepare teachers who are capable of utilizing Artificial Intelligence technologies to enhance instructional delivery and improve students' learning outcomes. However, its successful implementation requires adequate infrastructure, teacher training, ethical considerations, and policy support to address challenges such as data privacy, equity, and digital divide. Consequently, AI-driven curriculum innovation represents a transformative approach to modern education, aligning teaching and learning processes with the demands of an increasingly digital and knowledge-based society.

### Conceptual Framework for AI-Driven Curriculum Innovation



Conceptual Framework for AI-Driven Curriculum Innovation in Teacher Education.

The conceptual framework illustrates the relationship between Artificial Intelligence technologies, curriculum innovation, teaching practices, and learning outcomes. The roots of the tree represent Artificial Intelligence technologies, which provide the foundation for innovation in education. These technologies include intelligent tutoring systems, adaptive learning platforms, learning analytics tools, and automated grading systems. The trunk of the tree represents curriculum innovation, which integrates Artificial Intelligence concepts and digital competencies into teacher education programmes. The branches represent innovative teaching strategies enabled by Artificial Intelligence technologies. These strategies include personalized learning, collaborative learning,

and technology-supported instruction. Finally, the leaves represent improved teaching and learning outcomes, which contribute to enhanced educational quality and national development.

### AI Tools Used in Education

AI Tool	Educational Application	Benefits
Intelligent Tutoring Systems	Provide personalized learning guidance	Improves student understanding
Adaptive Learning Platforms	Adjust content based on student performance	Supports individualized learning
Learning Analytics Systems	Analyze student performance data	Helps teachers identify struggling learners
Educational Chatbots	Provide automated academic assistance	Enhances student support
Automated Grading Systems	Evaluate assignments and quizzes	Reduces teachers' workload

These AI tools support efficient teaching and learning processes and help educators provide personalized instruction.

### Challenges of AI Integration in Nigerian Colleges of Education

Despite the numerous benefits of Artificial Intelligence in education, several challenges hinder its effective integration in Nigerian Colleges of Education. These challenges include:

1. Inadequate ICT infrastructure in many institutions
2. Limited digital competencies among educators
3. Insufficient funding for educational technology
4. Lack of comprehensive national policies for AI integration in education

Addressing these challenges requires collaborative efforts from government agencies, educational institutions, and technology stakeholders.

## Conclusion

Artificial Intelligence has emerged as a transformative technology capable of improving educational systems worldwide. Integrating Artificial Intelligence into curriculum design can help educators adopt innovative teaching strategies and enhance students' learning experiences. For Nigerian Colleges of Education, Artificial Intelligence driven curriculum innovation represents an important strategy for improving teacher education and supporting national development. By embracing Artificial Intelligence technologies, teacher education institutions can prepare educators who are capable of meeting the demands of the modern digital world.

## Suggestions

The following suggestions were proposed to support Artificial Intelligence-driven curriculum innovation in Nigerian Colleges of Education:

1. Teacher education curriculum should incorporate Artificial Intelligence literacy courses.
2. Government should invest in ICT infrastructure for educational institutions.
3. Professional development programmes should be organized for teachers on AI technologies.
4. Educational institutions should establish digital innovation laboratories.
5. Collaboration between academia and technology industries should be strengthened.

## References

- Adeleke, T. E., & Adeleke, B. B. (2025). Curriculum innovation and sustainable development in Nigeria education. *International Journal of Academic Management Science Research*.
- Darling-Hammond, L. (2020). *The flat world and education: How America's commitment to equity will determine our future* (2nd ed.). Teachers College Press.
- Darling-Hammond, L., Flook, L., Cook-Harvey, C., Barron, B., & Osher, D. (2020). Implications for educational practice of the science of learning and development. *Applied Developmental Science*, 24(2), 97-140.
- European Commission. (2021). Teachers in Europe: Careers, development and well-being. *Publications Office of the European Union*.

- Fullan, M. (2020). *Leading in a culture of change* (2nd ed.). Jossey-Bass.
- Holmes, W., Bialik, M., & Fadel, C. (2019). *Artificial intelligence in education: Promises and implications for teaching and learning*. *Center for Curriculum Redesign*.
- Luckin, R., Holmes, W., Griffiths, M., & Forcier, L. (2018). *Intelligence unleashed: An argument for AI in education*. Pearson.
- Meshach, U. T., & Alyegba, M. N. (2025). The roles of teachers in curriculum innovation in the 21st century Nigeria. SSRN.
- OECD. (2021). *Teachers and school leaders as lifelong learners*. OECD Publishing.
- Russell, S., & Norvig, P. (2021). *Artificial intelligence: A modern approach* (4th ed.). Pearson.
- UNESCO. (2020). *Education in a post-COVID world: Nine ideas for public action*. UNESCO.
- UNESCO. (2021). *Artificial intelligence and education: Guidance for policy-makers*. UNESCO Publishing.
- Voogt, J., Laferrière, T., Breuleux, A., Itow, R. C., Hickey, D. T., & McKenney, S. (2021). Collaborative design as a form of professional development. *Instructional Science*, 49(2), 121-141.